

## 交流浪涌滤波器 AF1451-X-55

### ■ 特点

电流范围宽  
高低频性能都极其优异

### ■ 用途

用于通讯设备等需要抑制高频干扰的场合。



### ■ 技术参数

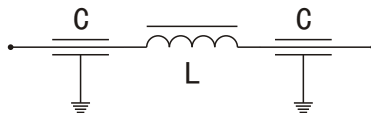
额定电压: 250VAC 50/60Hz

工作/储存环境温度:  $-25\sim+85^{\circ}\text{C}/-40\sim85^{\circ}\text{C}$

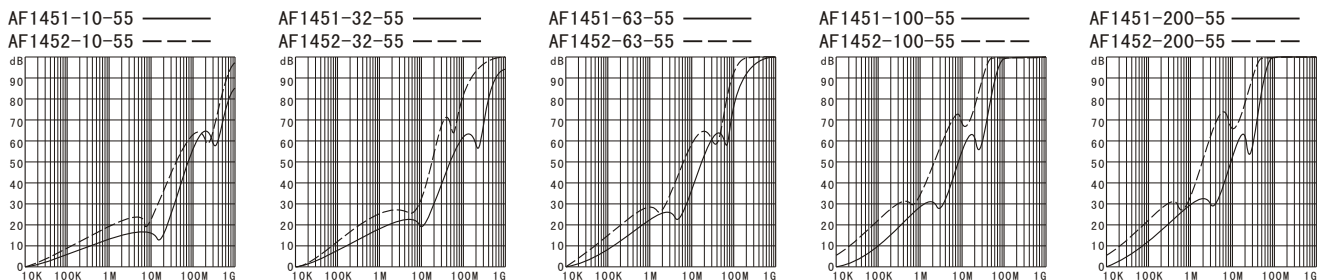
绝缘电阻:  $\geq 1500\text{s}(\text{M}\Omega \cdot \mu\text{F}, \text{端子到地}/500\text{VDC})$  耐电压(一分钟): 端子一地: 1500VAC或2250VDC

型号	额定电流 (@40°C)	泄漏电流 250VAC/50Hz	元件参数 (供参考)		接线端螺纹
			L (nH)	C (nF) ( $\pm 20\%$ )	
AF1451-10-55	10A	<1mA	70	4.7	M3
AF1452-10-55	10A	<2.1mA	140	10	M3
AF1451-32-55	32A	<2.1mA	70	10	M4
AF1452-32-55	32A	<4.6mA	170	22	M4
AF1451-63-55	63A	<9.7mA	80	47	M6
AF1452-63-55	63A	<21mA	180	100	M6
AF1451-100-55	100A	<21mA	90	100	M8
AF1452-100-55	100A	<97mA	240	470	M8
AF1451-200-55	200A	<21mA	120	100	M10
AF1452-200-55	200A	<97mA	330	470	M10

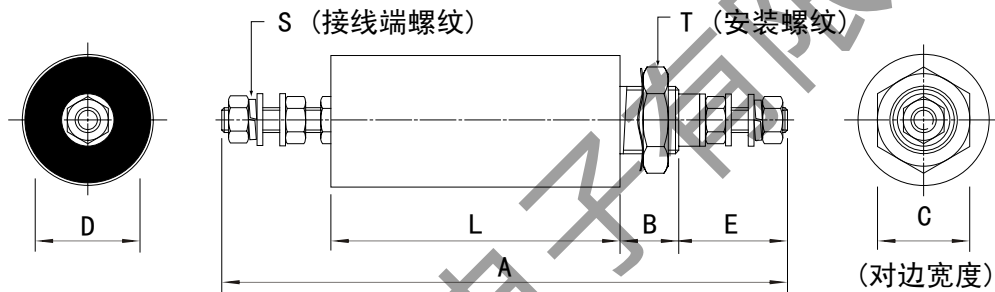
### ■ 电原理图



■ 典型衰减特性（插入损耗） CISPR17/50Ω 测试系统



■ 外形尺寸（单位：毫米）



型号	外形尺寸						螺纹	
	直径 D	长度 L	总长 A	B	C	E	安装 T	接线端 S
AF1451-10-55	20	57	98	12	17	16	M12×1	M3
AF1452-10-55	20	66	107	12	17	16	M12×1	M3
AF1451-32-55	20	61	106	12	17	18	M12×1	M4
AF1452-32-55	25	69	116	14	22	18	M16×1	M4
AF1451-63-55	25	94	160	14	22	26	M16×1	M6
AF1452-63-55	32	105	173	16	27	26	M20×1	M6
AF1451-100-55	32	105	184	16	27	32	M20×1	M8
AF1452-100-55	38	145	228	19	27	32	M24×1	M8
AF1451-200-55	38	112	209	19	27	40	M24×1	M10
AF1452-200-55	54	146	243	19	40	40	M30×1.5	M10



# Feedthrough Filters (AC) AF1451-X-55

## ■ Features

- Large current
- High reliability and wide range temperature environments

## ■ Applications

- Input of electronic instruments system, suppress the electromagnetic interference on wide band, suited in applications of communications

Applications: Power electronics、Consumer electronics、Medical equipments、Telecommunication、Test equipments

## ■ Technical date

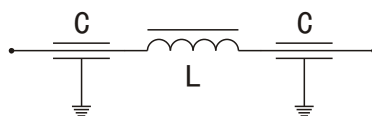
Rated voltage: 250VAC 50/60Hz      Climatic category: -25~+85°C/-40~+85°C

Insulation resistance:  $\geq 1500s(M\Omega, \mu F, \text{between terminal and ground}/500VDC)$

Test voltage(1 min): terminal/terminal: 1500VDC; between terminal and ground: 1500VAC or 2250VDC

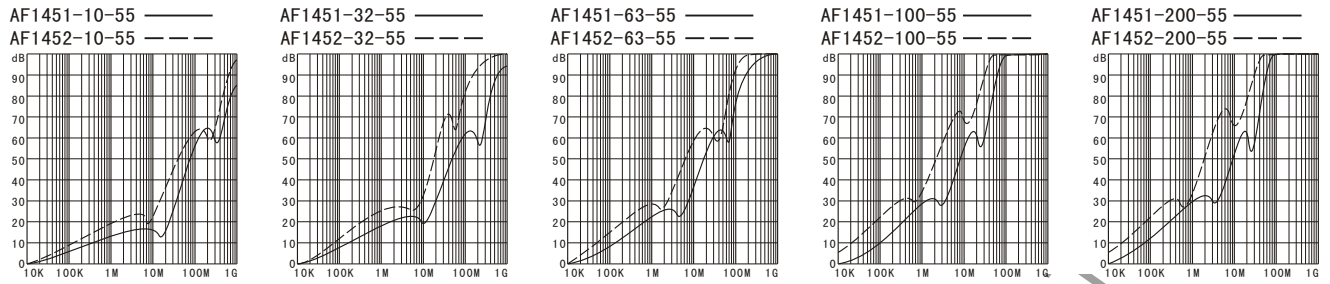
Model	Rated current (@40°C)	Leakage current 250VAC/50Hz	Component parameters (for reference)		Screw terminal connections
			L (nH)		
AF1451-10-55	10A	<1mA	70	4.7	M3
AF1452-10-55	10A	<2.1mA	140	10	M3
AF1451-32-55	32A	<2.1mA	70	10	M4
AF1452-32-55	32A	<4.6mA	170	22	M4
AF1451-63-55	63A	<9.7mA	80	47	M6
AF1452-63-55	63A	<21mA	180	100	M6
AF1451-100-55	100A	<21mA	90	100	M8
AF1452-100-55	100A	<97mA	240	470	M8
AF1451-200-55	200A	<21mA	120	100	M10
AF1452-200-55	200A	<97mA	330	470	M10

## ■ Circuit diagram

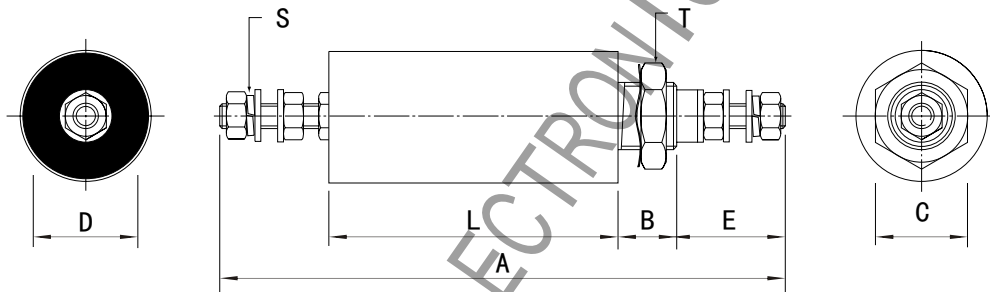


- Above specifications is only for reference, if any changes, we will not inform.
- Before you order, please contact us to ask the latest edited specifications for approval, and know the details of the products.

## ■ Typical values (Insertion Loss) CISPR17/50Ω Test System



## ■ Dimensional Drawing (unit:mm)



Model	Dimensional Drawing code						Thread	
	Diameter(D)	Lenth(L)	The total lenth A	B	C	E	Assemble(T)	Terminal(S)
AF1451-10-55	20	57	98	12	17	16	M12×1	M3
AF1452-10-55	20	66	107	12	17	16	M12×1	M3
AF1451-32-55	20	61	106	12	17	18	M12×1	M4
AF1452-32-55	25	69	116	14	22	18	M16×1	M4
AF1451-63-55	25	94	160	14	22	26	M16×1	M6
AF1452-63-55	32	105	173	16	27	26	M20×1	M6
AF1451-100-55	32	105	184	16	27	32	M20×1	M8
AF1452-100-55	38	145	228	19	27	32	M24×1	M8
AF1451-200-55	38	112	209	19	27	40	M24×1	M10
AF1452-200-55	54	146	243	19	40	40	M30×1.5	M10



深圳市坚力电子有限公司  
SHENZHEN JIANLI ELECTRONIC CO.,LTD.