



安规认证 Approvals



特点和优点 Features and benefits

- ❖ 结构紧凑，安装快捷方便
Compact size, fast and easy chassis mounting
- ❖ 有不同端接方式可供选择
Various terminal connection styles
- ❖ 优越的共模和差模衰减特性，适用于需要满足排放标准的嘈杂设备
Excellent common mode and differential mode attenuation, for noisy equipment that must meet conducted emission limits

典型应用 Typical applications

- ❖ 电气和电子设备
Electrical and electronic equipment
- ❖ 医疗和数据处理设备
Medical and data processing equipment
- ❖ 应用于开关电源，抑制连续或间隙性脉冲干扰
Particularly for switching power supplies, suppressing continuous or intermittent pulse interference

技术参数 Technical specifications

额定电压 Maximum continuous operating voltage :	250VAC
工作频率 Operating frequency :	50/60Hz
额定电流 Rated currents :	1A ~ 50A @ 40°C Max.
耐压试验(一分钟) High potential test voltage(1 min) :	Line to Line 1500VDC / Line to Ground 1500VAC
工作和储存环境温度 Operation and storage temperature range :	-25°C ~ +85°C (25/085/21)

型号 Filter	额定电流 Rated current @40°C [A]	泄露电流 ** Leakage rate ** 250VAC/50Hz [mA]	电容 Capacitance Cy [nF]	电阻 Resistance R [kΩ]	端接方式 Terminal connections	电路图 Electrical schematic [fig.]	外形尺寸 Dimensions [fig.]
AH2201-1-XX*	1	< 1.0	4.4	1500	- 33 or - 44	1	1 or 2
AH2201-2-XX*	2	< 1.0	6.6	1500	- 33 or - 44	1	3 or 4
AH2201-3-XX*	3	< 1.5	9.4	1500	- 33 or - 44	1	3 or 4
AH2201-6-XX*	6	< 1.5	9.4	1500	- 33 or - 44	1	3 or 4
AH2201-10-XX*	10	< 1.5	9.4	1500	- 33 or - 55	1	3 or 6
AH2201-12-XX*	12	< 1.5	9.4	1500	- 33 or - 55	1	5 or 6
AH2201-16-XX*	16	< 1.5	9.4	1500	- 33 or - 55	1	5 or 6
AH2201-20-55	20	< 2.0	9.4	1500	- 55	1	7
AH2201-30-55	30	< 2.0	6.6	1000	- 55	1	8
AH2201-40-55	40	< 2.0	13.6	1000	- 55	1	9
AH2201-50-55	50	< 2.0	13.6	1000	- 55	1	10

* 编辑完整的型号，请更换“-XX”为输入和输出的端接方式“-33”，“-44”或“-55”。

To compile a complete part number, please replace the “-XX” with the required input/output terminal connection style “-33”, “-44” or “-55”.

** 最大泄漏电流是在正常状态下测得，注意如果中线断开，最坏情况下泄露电流可能达到两倍以上。

Maximum leakage under normal operating conditions, note: if the neutral line is interrupted, worst case leakage could reach twice this level.

电路图 Electrical schematics

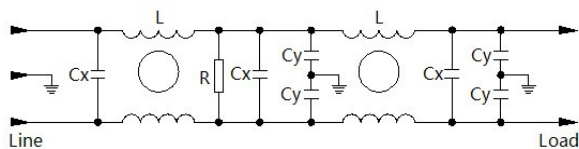
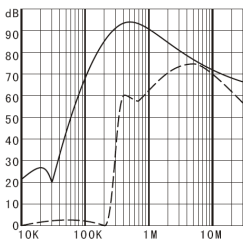


fig. 1

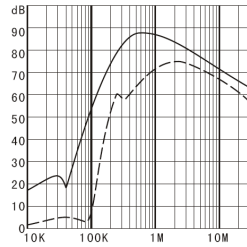
典型衰减特征 Typical filter attenuation

Per CISPR 17/50Ω system [———— 共模 Common mode ; - - - - - 差模 Differential mode]

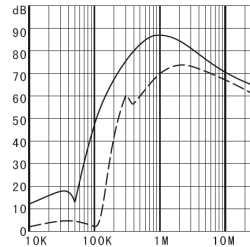
AH2201 - 1 - 33/44



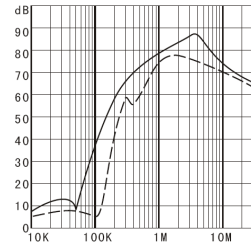
AH2201 - 2 - 33/44



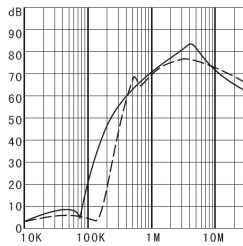
AH2201 - 3 - 33/44



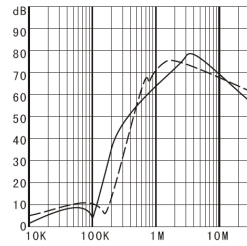
AH2201 - 6 - 33/44



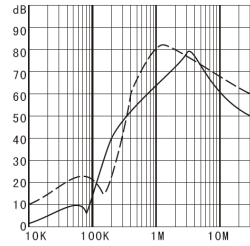
AH2201 - 10 - 33/55



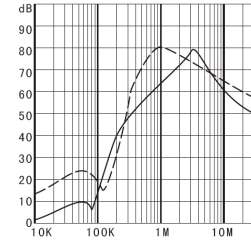
AH2201 - 12/16 - 33/55



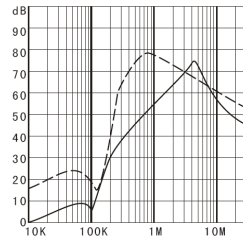
AH2201 - 20 - 55



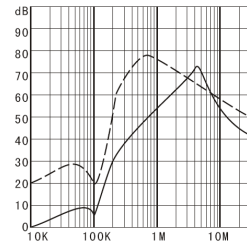
AH2201 - 30 - 55



AH2201 - 40 - 55



AH2201 - 50 - 55



外形尺寸 Dimensions [All dimensions in mm]

端接方式 Connections style “- 33”

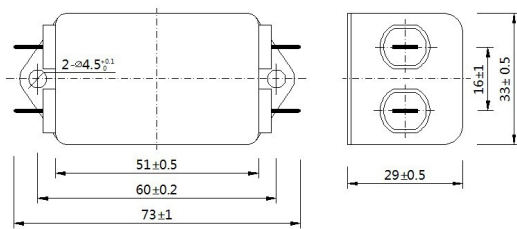


fig. 1

端接方式 Connections style “- 44” *

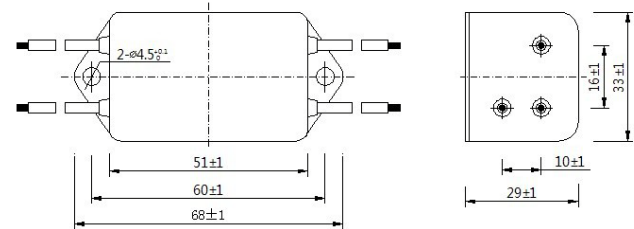


fig. 2

端接方式 Connections style “- 33”

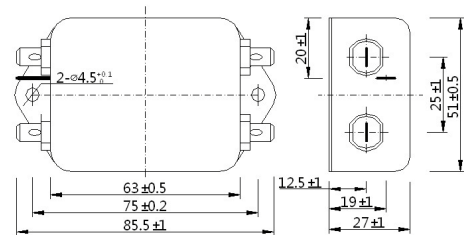


fig. 3

端接方式 Connections style “- 44” *

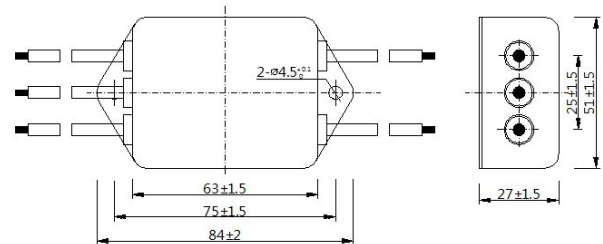


fig. 4

* 输入和输出的端接方式“- 44”，导线可按要求加长或另订制长度。

Input/output terminal connection style “- 44”, other cable length or additional wire connector on request.

端接方式 Connections style “- 33”

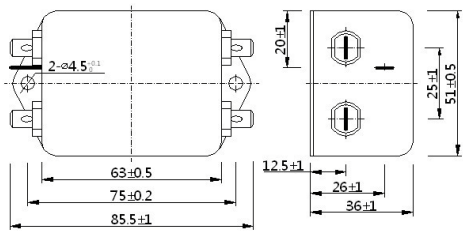


fig. 5

端接方式 Connections style “- 55”

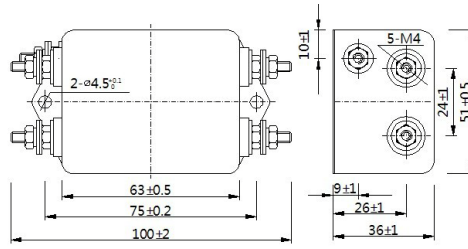


fig. 6

端接方式 Connections style “- 55”

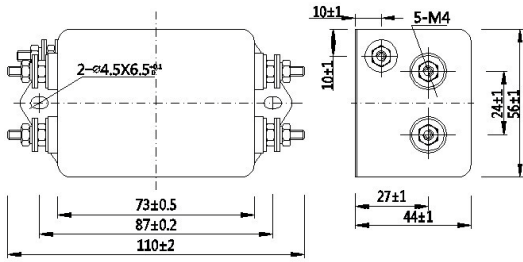


fig. 7

端接方式 Connections style “- 55”

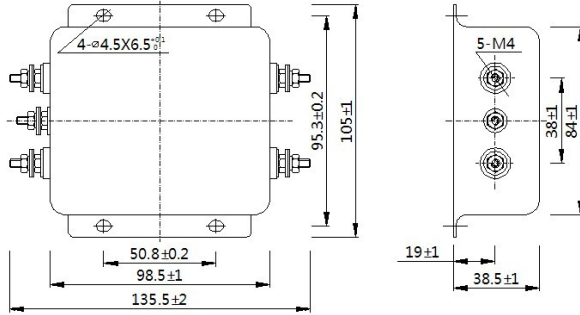


fig. 8

端接方式 Connections style “- 55”

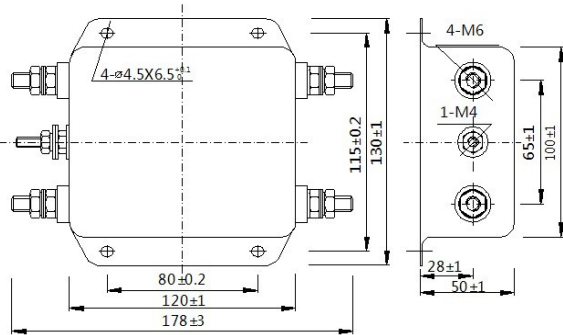


fig. 9