



安规认证 Approvals



特点和优点 Features and benefits


- ❖ 安装快捷方便
Fast and easy chassis mounting
- ❖ 有不同端接方式可供选择
Various terminal connection styles
- ❖ 通用直流端口用滤波器，电流范围宽
Filters for common direct current port, wide current range

典型应用 Typical applications

- ❖ 用于开关逆变电源设备和通讯交换系统的直流端口
For electrical inverter power supply equipment and communications switching system DC port
- ❖ 应用行业包括电源系统、商业设备、医疗设备、测试设备和工业电子
Applicable industries include: electrical power generating system; commercial equipment; medical equipment; testing equipment; industrial electronics

技术参数 Technical specifications

| | |
|---|---|
| 额定电压 Maximum continuous operating voltage : | 80VDC |
| 额定电流 Rated currents : | 80A ~ 200A @ 40°C Max. |
| 耐压试验(一分钟) High potential test voltage(1 min) : | Line to Line 500VDC / Line to Ground 750VDC |
| 工作和储存环境温度 Operation and storage temperature range : | -25°C~+85°C (25/085/21) |

| 型号 Filter | 额定电流 Rated current @40°C [A] | 电容 Capacitance Cy [nF] | 端接方式 Terminal connections  | 电路图 Electrical schematic [fig.] | 外形尺寸 Dimensions [fig.] |
|---------------|------------------------------------|------------------------------|---|---------------------------------------|------------------------------|
| DG2301-80-55 | 80 | 22 | - 55 | 1 | 1 |
| DG2301-100-55 | 100 | 22 | - 55 | 1 | 1 |
| DG2301-120-55 | 120 | 22 | - 55 | 1 | 1 |
| DG2301-140-55 | 140 | 22 | - 55 | 1 | 1 |
| DG2301-160-55 | 160 | 22 | - 55 | 1 | 1 |
| DG2301-180-55 | 180 | 22 | - 55 | 1 | 2 |
| DG2301-200-55 | 200 | 22 | - 55 | 1 | 2 |
| DG2401-20-55 | 20 | 47 | - 55 | 2 | 3 |
| DG2401-30-55 | 30 | 47 | - 55 | 2 | 3 |
| DG2401-50-55 | 50 | 47 | - 55 | 2 | 3 |

电路图 Electrical schematics

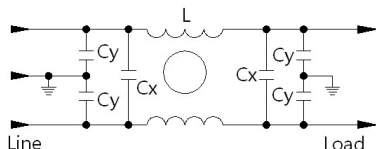


fig. 1

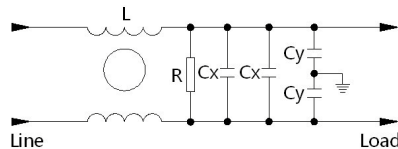
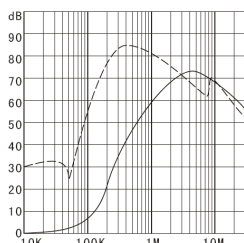


fig. 2

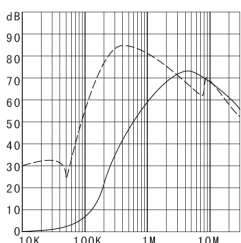
典型衰减特征 Typical filter attenuation

Per CISPR 17/50Ω system [———— 共模 Common mode ; - - - - - 差模 Differential mode]

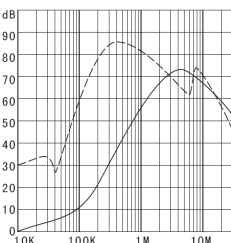
DG2301-80-55



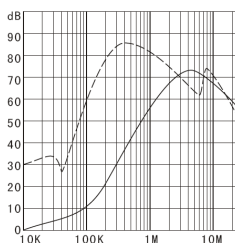
DG2301-100-55



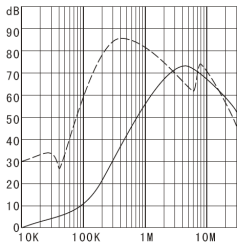
DG2301-120-55



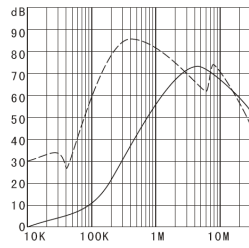
DG2301-140-55



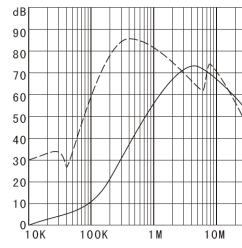
DG2301-160-55



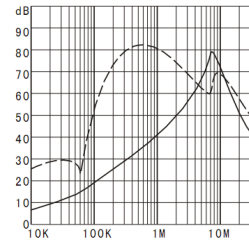
DG2301-180-55



DG2301-200-55



DG2401-20/30/50-55



外形尺寸 Dimensions [All dimensions in mm]

端接方式 Connections style "- 55"

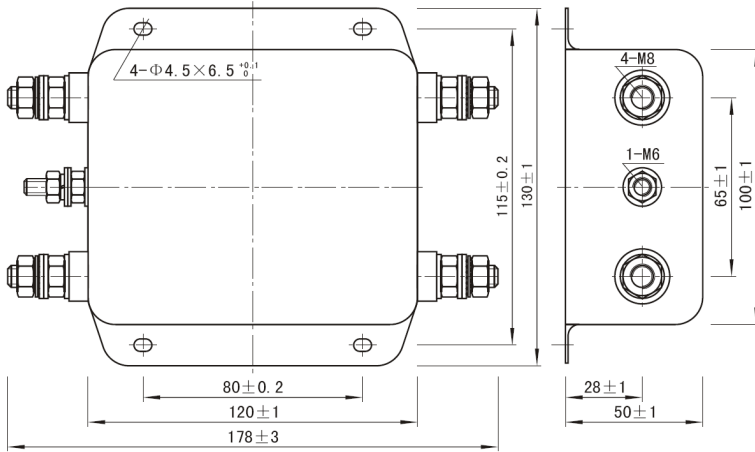


fig. 1

端接方式 Connections style "- 55"

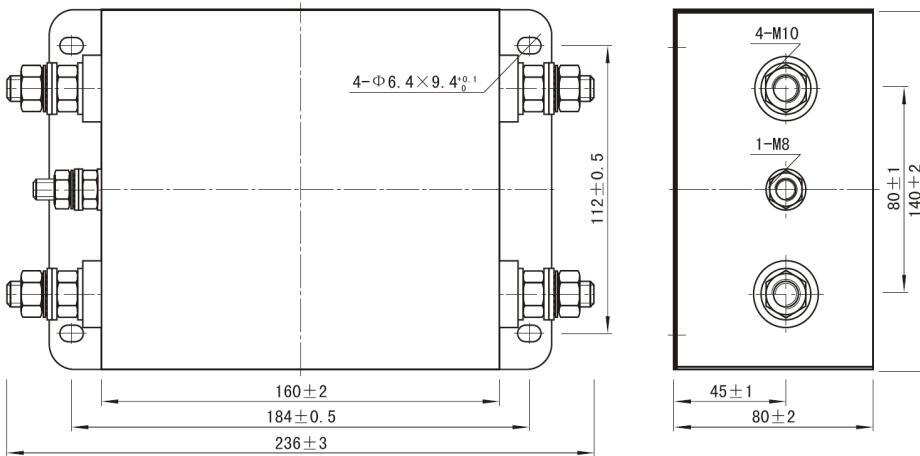


fig. 2

端接方式 Connections style "- 55"

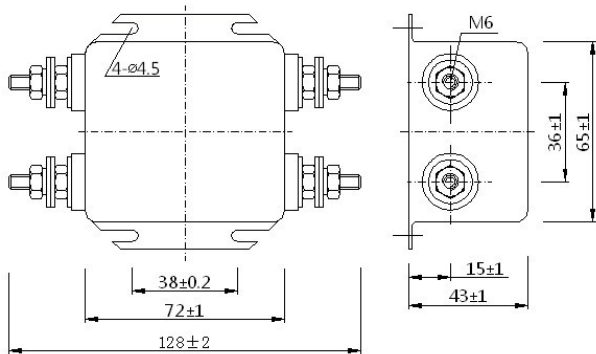


fig. 3