

# 三相三线超高性能系列 Three-Phase and Three-Line Ultra-High Performance Series



安规认证 Approvals



## 特点和优点 Features and benefits


- ❖ 结构紧凑，安装快捷方便  
Compact size, fast and easy chassis mounting
- ❖ 有效地适用于平衡和不平衡的三相负载  
Effective for both balanced and unbalanced three phase loads
- ❖ 卓越的干扰抑制性能，电流范围广  
Excellent performance of interference suppression, wide current range

## 典型应用 Typical applications

- ❖ 电气和电子电源系统  
Electrical and electronic power system
- ❖ 医疗和商业设备  
Medical and commercial equipment
- ❖ 自动化和工业测试设备  
Automation and industrial testing equipment

## 技术参数 Technical specifications

额定电压 Maximum continuous operating voltage :	440VAC
工作频率 Operating frequency :	50/60Hz
额定电流 Rated currents :	5A ~ 250A @ 40°C Max.
耐压试验(一分钟) High potential test voltage(1 min) :	Line to Line 1500VDC / Line to Ground 1500VAC
工作和储存环境温度 Operation and storage temperature range :	-25°C~+85°C (25/085/21)

型号 Filter	额定电流 Rated current @40°C [A]	泄露电流 * Leakage rate * 250VAC/50Hz [mA]	电容 Capacitance Cy [nF]	电阻 Resistance R [kΩ]	端接方式 Terminal connections 	电路图 Electrical schematic [fig.]	外形尺寸 Dimensions [fig.]
AS3101-5-55	5	< 2.5	50	1000	- 55	1	1
AS3101-10-55	10	< 2.5	50	1000	- 55	1	1
AS3101-15-55	15	< 2.5	50	1000	- 55	1	1
AS3101-20-55	20	< 2.5	50	1000	- 55	1	2
AS3101-25-55	25	< 2.5	47	1000	- 55	1	2
AS3101-35-55	35	< 2.5	50	1000	- 55	1	2
AS3101-50-55	50	< 5	100	1000	- 55	1	2
AS3201-65-55	65	< 5	100	1000	- 55	2	3
AS3201-80-55	80	< 5	110	1000	- 55	1	3
AS3201-100-55	100	< 5	235	1000	- 55	1	3
AS3201-120-55	120	< 5	235	1000	- 55	1	3
AS3201-150-55	150	< 10	110	1000	- 55	1	3
AS3201-250-55	250	< 10	235	1000	- 55	1	4

\* 最大泄漏电流是在正常状态下测得，注意如果中线断开，最坏情况下泄露电流可能达到两倍以上。

Maximum leakage under normal operating conditions, note: if the neutral line is interrupted, worst case leakage could reach twice this level.

## 电路图 Electrical schematics

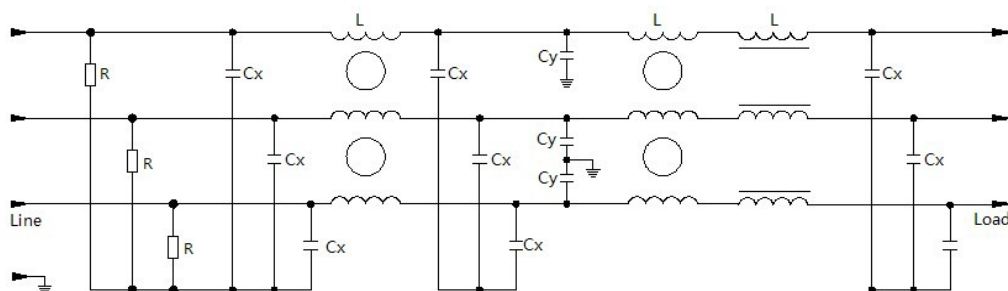


fig. 1

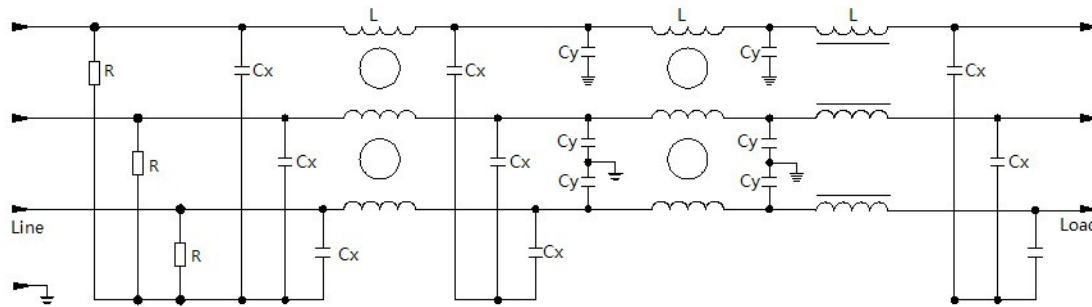
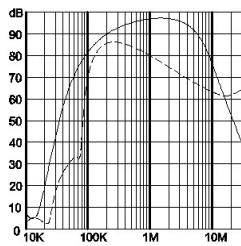


fig. 2

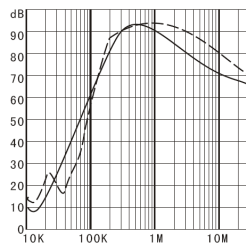
## 典型衰减特征 Typical filter attenuation

Per CISPR 17/50Ω system [ ——— 共模 Common mode ; - - - - - 差模 Differential mode ]

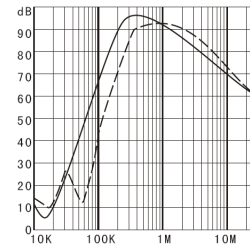
AS3101 - 5 - 55



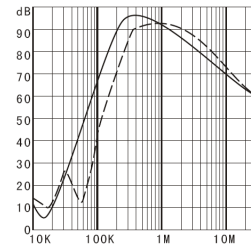
AS3101 - 10 - 55



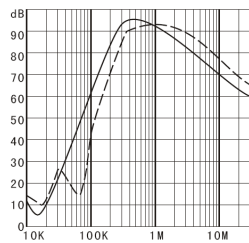
AS3101 - 15 - 55



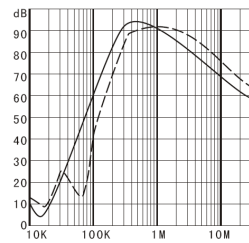
AS3101 - 20 - 55



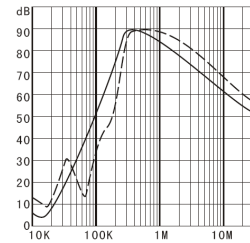
AS3101 - 25 - 55



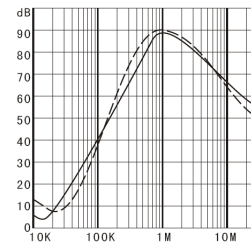
AS3101 - 35 - 55



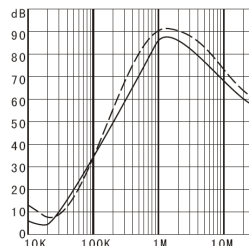
AS3101 - 50 - 55



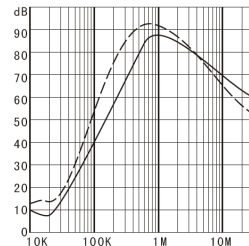
AS3201 - 65 - 55



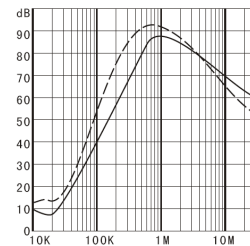
AS3201 - 80 - 55



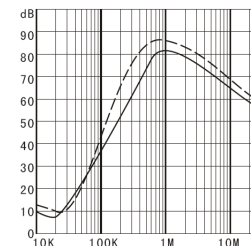
AS3201 - 100 - 55



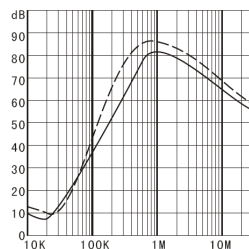
AS3201 - 120 - 55



AS3201 - 150 - 55



AS3201 - 250 - 55



外形尺寸 Dimensions [ All dimensions in mm ]

端接方式 Connections style “- 55”

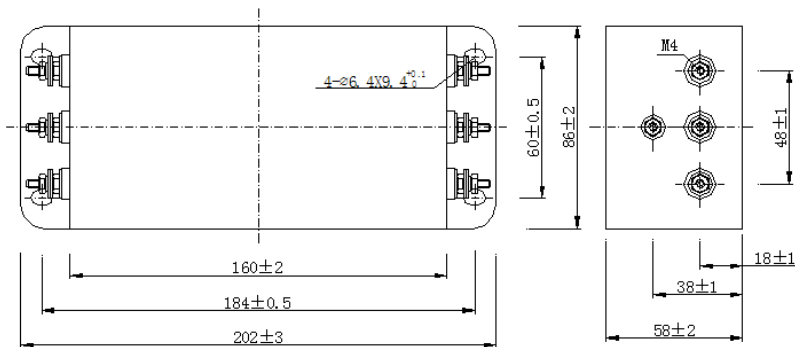


fig. 1

端接方式 Connections style “- 55”

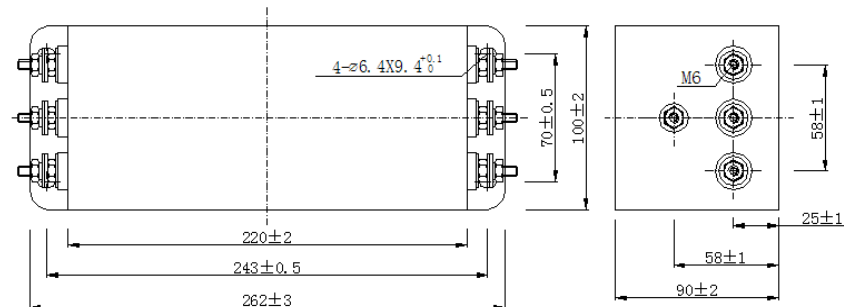


fig. 2

端接方式 Connections style “- 55”

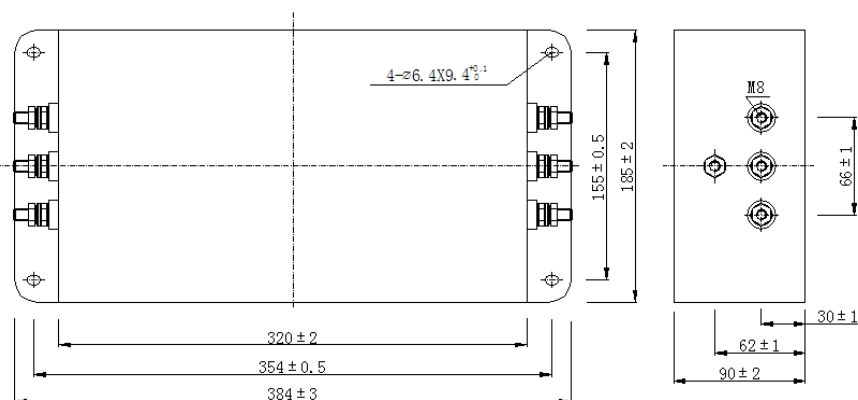


fig. 3

端接方式 Connections style “- 55”

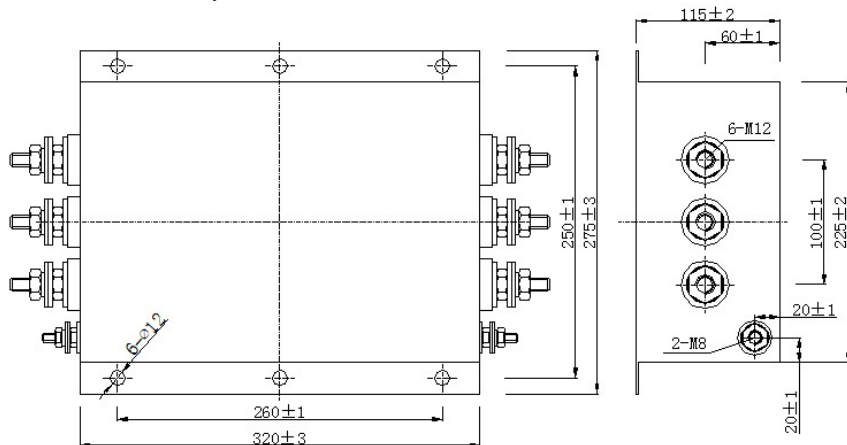


fig. 4