



安规认证 Approvals



特点和优点 Features and benefits

- ❖ 安装快捷方便
Fast and easy chassis mounting
- ❖ 有不同端接方式可供选择
Various terminal connection styles
- ❖ 通用直流端口用滤波器，电流范围宽
Filters for common direct current port, wide current range

典型应用 Typical applications

- ❖ 用于开关逆变电源设备和通讯交换系统的直流端口
For electrical inverter power supply equipment and communications switching system DC port
- ❖ 应用行业包括电源系统、商业设备、医疗设备、测试设备和工业电子
Applicable industries include: electrical power generating system; commercial equipment; medical equipment; testing equipment; industrial electronics

技术参数 Technical specifications

额定电压 Maximum continuous operating voltage :	250VDC
额定电流 Rated currents :	80A ~ 200A @ 40°C Max.
耐压试验(一分钟) High potential test voltage(1 min) :	Line to Line 500VDC / Line to Ground 750VDC
工作和储存环境温度 Operation and storage temperature range :	-25°C~+85°C (25/085/21)

型号 Filter	额定电流 Rated current @40°C [A]	电容 Capacitance Cy [nF]	端接方式 Terminal connections 	电路图 Electrical schematic [fig.]	外形尺寸 Dimensions [fig.]
DG2301-80-55	80	22	- 55	1	1
DG2301-100-55	100	22	- 55	1	1
DG2301-120-55	120	22	- 55	1	1
DG2301-140-55	140	22	- 55	1	1
DG2301-160-55	160	22	- 55	1	1
DG2301-180-55	180	22	- 55	1	2
DG2301-200-55	200	22	- 55	1	2
DG2401-20-55	20	47	- 55	2	3
DG2401-30-55	30	47	- 55	2	3
DG2401-50-55	50	47	- 55	2	3

电路图 Electrical schematics

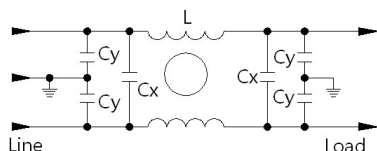


fig. 1

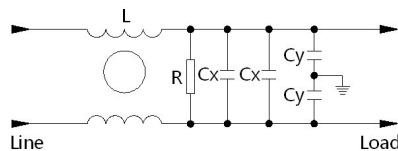
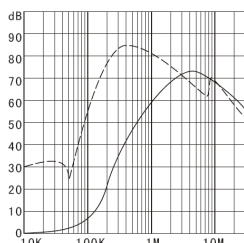


fig. 2

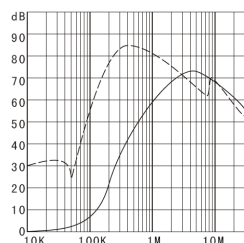
典型衰减特征 Typical filter attenuation

Per CISPR 17/50Ω system [———— 共模 Common mode ; - - - - - 差模 Differential mode]

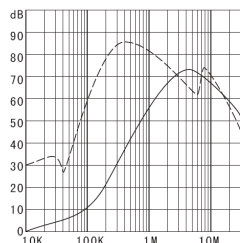
DG2301-80-55



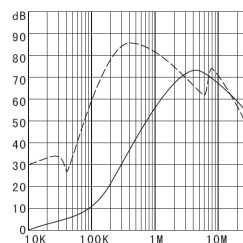
DG2301-100-55



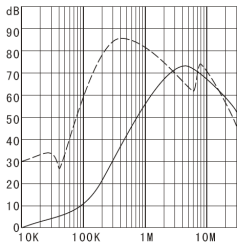
DG2301-120-55



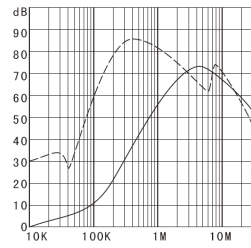
DG2301-140-55



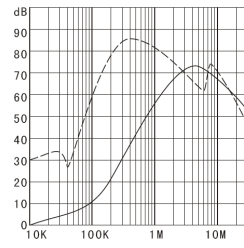
DG2301-160-55



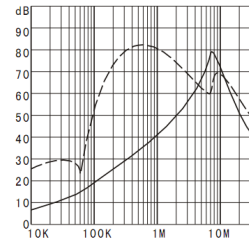
DG2301-180-55



DG2301-200-55



DG2401-20/30/50-55



外形尺寸 Dimensions [All dimensions in mm]

端接方式 Connections style "- 55"

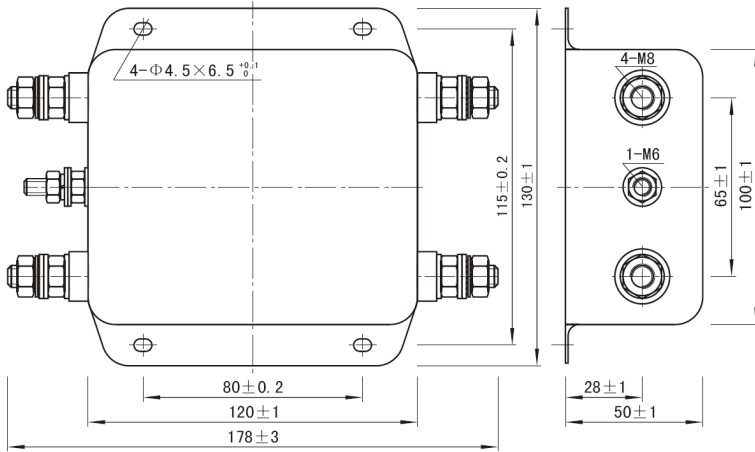


fig. 1

端接方式 Connections style "- 55"

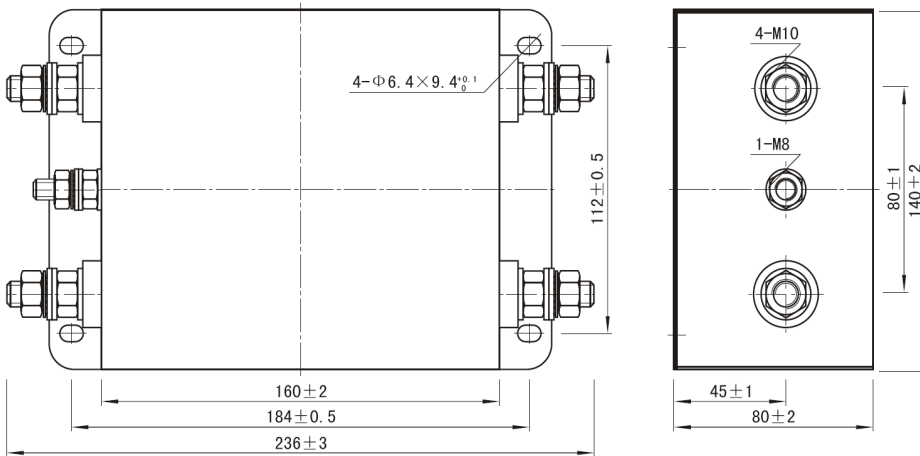


fig. 2

端接方式 Connections style "- 55"

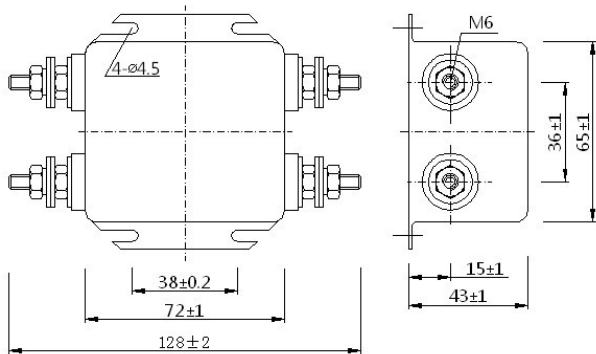


fig. 3