



安规认证 Approvals



特点和优点 Features and benefits

- ❖ 体积小，PCB 安装式一般用途滤波器  
Small size, PCB-mounting filter for general purpose
- ❖ 用于电源模块和小型电子仪表  
For modular power supplies and mini-electronic instruments
- ❖ 有效地滤除共差模噪声  
Filtering out the noise of common and differential mode effectively

典型应用 Typical applications

- ❖ 工业电子设备  
Industrial electronic equipment
- ❖ 医疗和商业设备  
Medical and commercial equipments
- ❖ 电源和测试设备  
Power supplies and testing equipments

技术参数 Technical specifications

额定电压 Maximum continuous operating voltage :	250VAC
工作频率 Operating frequency :	50/60Hz
额定电流 Rated currents :	1A ~ 10A @ 40°C Max.
耐压试验(一分钟) High potential test voltage(1 min) :	Line to Line 1500VDC / Line to Ground 1500VAC
工作和储存环境温度 Operation and storage temperature range :	-25°C~+85°C (25/085/21)

型号 Filter	额定电流 Rated current @40°C [A]	泄露电流 * Leakage rate ** 250VAC/50Hz [mA]	电容 Capacitance Cy [nF]	电阻 Resistance R [kΩ]	端接方式 Terminal connections	电路图 Electrical schematic [fig.]	外形尺寸 Dimensions [fig.]
AG2101-1-00	1	< 0.5	2.2		- 00	1	1
AG2101-2-00	2	< 0.5	2.2		- 00	1	1
AG2101-3-00	3	< 0.5	2.2		- 00	1	1
AG2101-6-00	6	< 0.5	2.2		- 00	1	1
AG2101-10-00	10	< 0.5	3.3		- 00	1	1
AG2201-3-00	3	< 0.5	3.3	1.5	- 00	2	2
AG2201-6-00	6	< 0.5	3.3	1.5	- 00	2	2
AG2201-10-00	10	< 0.5	3.3	1.5	- 00	2	2

\* 最大泄露电流是在正常状态下测得，注意如果中线断开，最坏情况下泄露电流可能达到两倍以上。  
Maximum leakage under normal operating conditions, note: if the neutral line is interrupted, worst case leakage could reach twice this level.

电路图 Electrical schematics

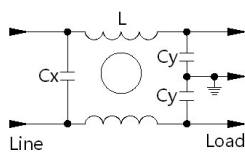


fig. 1

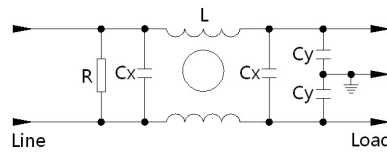
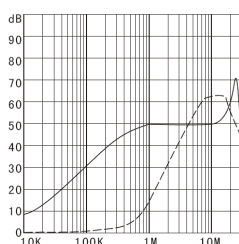


fig. 2

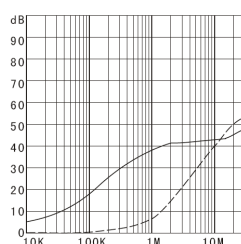
典型衰减特征 Typical filter attenuation

Per CISPR 17/50Ω system [ ———— 共模 Common mode ; - - - - - 差模 Differential mode ]

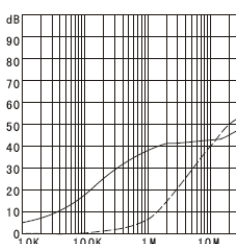
AG2101-1-00



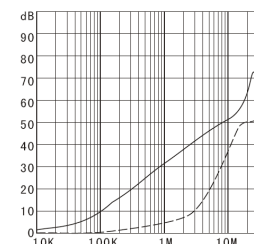
AG2101-2-00



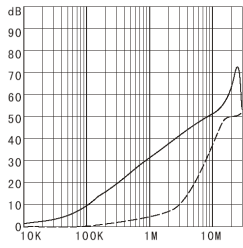
AG2101-3-00



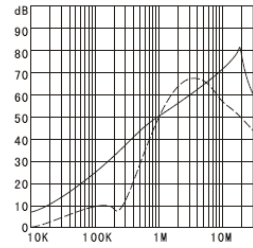
AG2101-6-00



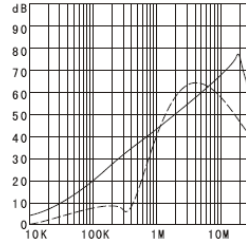
AG2101-10-00



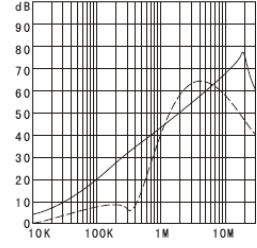
AG2201-3-00



AG2201-6-00



AG2201-10-00



外形尺寸 Dimensions [ All dimensions in mm ]

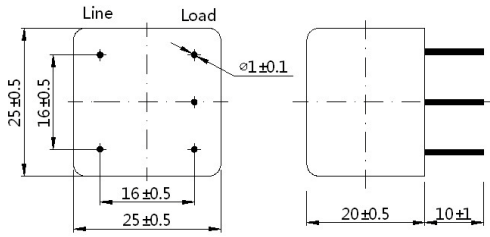


fig. 1

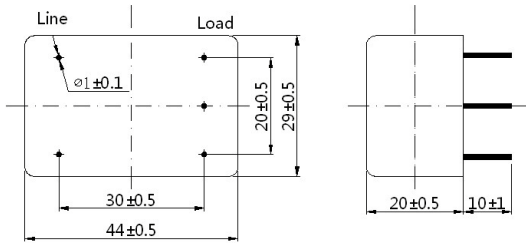


fig. 2