

# IEC 插座式通用系列 IEC-inlet General Purpose Series



安规认证 Approvals



## 特点和优点 Features and benefits

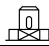
- ❖ 体积小, IEC 插座式电源输入滤波器  
Small size, IEC-inlet power entry filter
- ❖ 用于测量和小型电子仪表  
For measuring and mini-electronic instruments
- ❖ 良好的干扰抑制性能  
Good performance of interference suppression

## 典型应用 Typical applications

- ❖ 工业电子设备  
Industrial electronic equipment
- ❖ 医疗和商业设备  
Medical and commercial equipments
- ❖ 办公和电子测试设备  
Office and testing equipments

## 技术参数 Technical specifications

额定电压 Maximum continuous operating voltage :	250VAC
工作频率 Operating frequency :	50/60Hz
额定电流 Rated currents :	1A ~ 10A @ 40°C Max.
耐压试验(一分钟) High potential test voltage(1 min) :	Line to Line 1500VDC / Line to Ground 1500VAC
工作和储存环境温度 Operation and storage temperature range :	-25°C~+85°C (25/085/21)

型号 Filter	额定电流 Rated current @40°C [A]	泄露电流 * Leakage rate * 250VAC/50Hz [mA]	电容 Capacitance Cy [nF]	端接方式 Terminal connections 	电路图 Electrical schematic [fig.]	外形尺寸 ** Dimensions ** [fig.]
AG2101-1-13	1	< 0.5	2.2	- 13	1	1, 2, 3 or 4
AG2101-2-13	2	< 0.5	2.2	- 13	1	1, 2, 3 or 4
AG2101-3-13	3	< 0.5	3.3	- 13	1	1, 2, 3 or 4
AG2101-6-13	6	< 0.5	3.3	- 13	1	1, 2, 3 or 4
AG2101-10-13	10	< 0.5	3.3	- 13	1	1, 2, 3 or 4

\* 最大泄漏电流是在正常状态下测得, 注意如果中线断开, 最坏情况下泄露电流可能达到两倍以上。

Maximum leakage under normal operating conditions, note: if the neutral line is interrupted, worst case leakage could reach twice this level.

\*\* 可按要求装配两种不同形状的输出端子和外壳。

Two different shapes of terminal connection and shell on request.

## 电路图 Electrical schematics

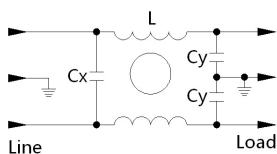
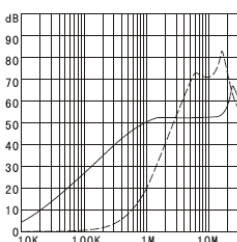


fig. 1

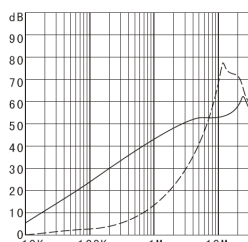
## 典型衰减特征 Typical filter attenuation

Per CISPR 17/50Ω system [ ———— 共模 Common mode ; - - - - - 差模 Differential mode ]

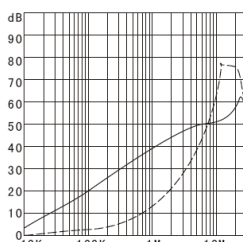
AG2101-1-13



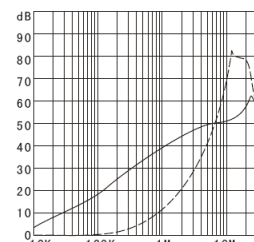
AG2101-2-13



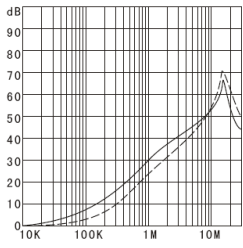
AG2101-3-13



AG2101-6-13



AG2101-10-13



外形尺寸 Dimensions [ All dimensions in mm ]

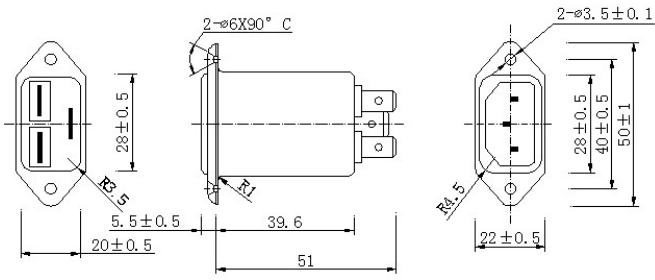


fig. 1

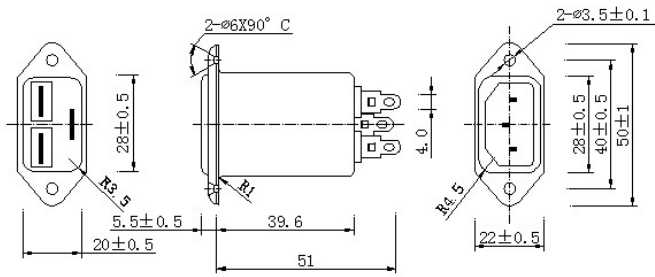


fig. 2

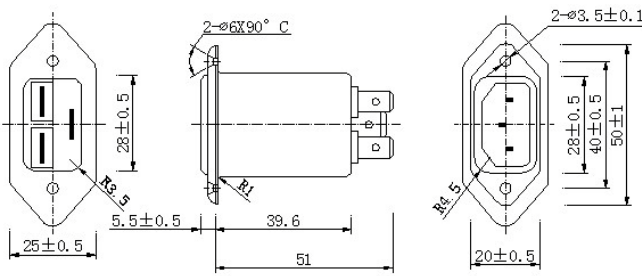


fig. 3

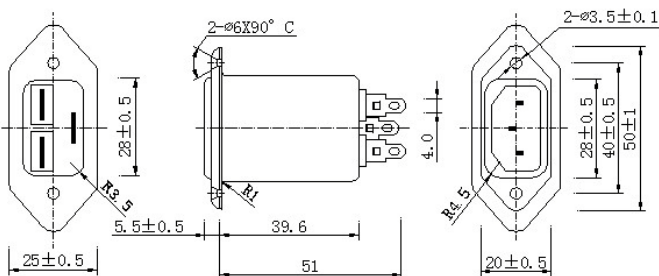


fig. 4