

PCB 安装式直流通用系列 PCB-Mounting Direct Current General Purpose Series



特点和优点 Features and benefits

- ❖ 体积小，PCB 安装式一般直流用途滤波器
Small size, PCB-mounting filter for DC general purpose
- ❖ 用于电源模块和小型电子仪表
For modular power supplies and mini-electronic instruments
- ❖ 有效地滤除共差模噪声
Filtering out the noise of common and differential mode effectively

典型应用 Typical applications

- ❖ 工业电子设备
Industrial electronic equipment
- ❖ 医疗和商业设备
Medical and commercial equipments
- ❖ 电源和测试设备
Power supplies and testing equipments

技术参数 Technical specifications

额定电压 Maximum continuous operating voltage :	80VDC
工作频率 Operating frequency :	50/60Hz
额定电流 Rated currents :	1A ~ 20A @ 40°C Max.
耐压试验(一分钟) High potential test voltage(1 min) :	Line to Line 400VDC / Line to Ground 750VDC
工作和储存环境温度 Operation and storage temperature range :	-25°C~+85°C (25/085/21)

型号 Filter	额定电流 Rated current @40°C [A]	电容 Capacitance Cy [nF]	端接方式 Terminal connections	电路图 Electrical schematic [fig.]	外形尺寸 Dimensions [fig.]
DG2101-1-00	1	22	- 00	1	1
DG2101-2-00	2	22	- 00	1	1
DG2101-3-00	3	22	- 00	1	1
DG2101-5-00	5	22	- 00	1	2
DG2201-3-00	3	220	- 00	2	3
DG2201-6-00	6	10	- 00	2	3
DG2201-10-00	10	33	- 00	3	4

电路图 Electrical schematics

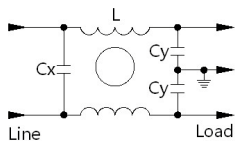


fig. 1

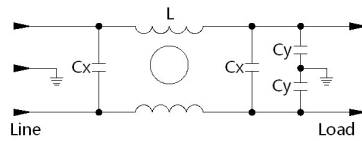


fig. 2

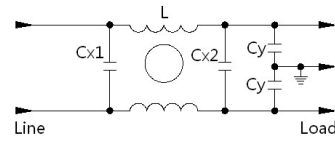
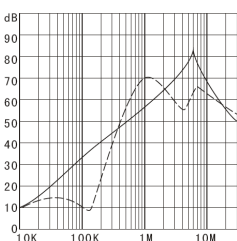


fig. 3

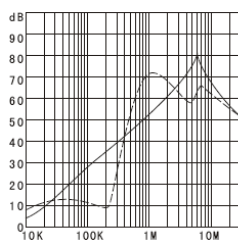
典型衰减特征 Typical filter attenuation

Per CISPR 17/50Ω system [———— 共模 Common mode ; - - - - - 差模 Differential mode]

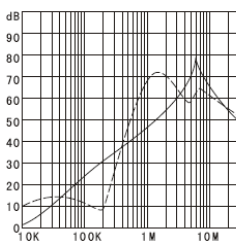
DG2101-1-00



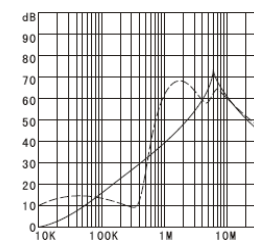
DG2101-2-00



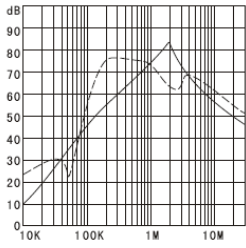
DG2101-3-00



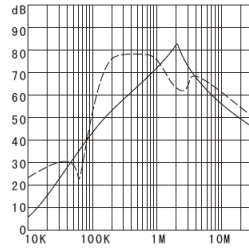
DG2101-5-00



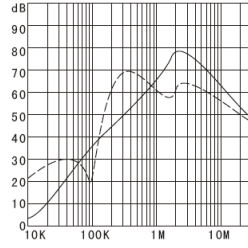
DG2201-3-00



DG2201-6-00



DG2201-10-00



外形尺寸 Dimensions [All dimensions in mm]

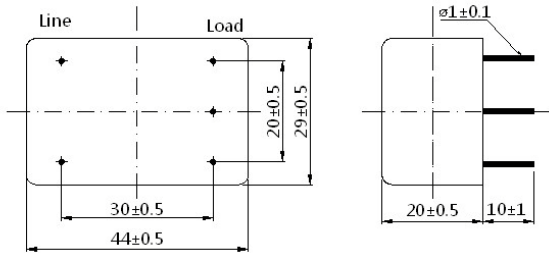


fig. 1

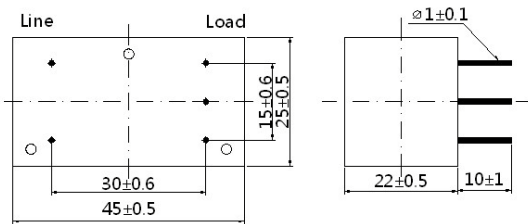


fig. 2

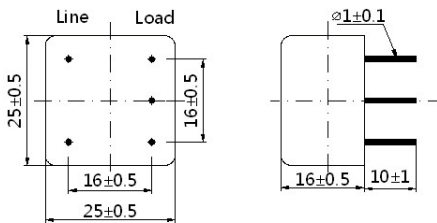


fig. 3

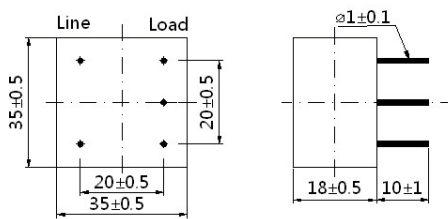


fig. 4