



特点和优点 Features and benefits

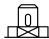
- ❖ IEC 插座式电源输入滤波器，带保险丝模块化一体结构
IEC-inlet power entry filter, integrated design of module with fuses
- ❖ 用于测量和小型电子仪表
For measuring and mini-electronic instruments
- ❖ 良好的干扰抑制性能
Good performance of interference suppression

典型应用 Typical applications

- ❖ 工业电子设备
Industrial electronic equipment
- ❖ 医疗和商业设备
Medical and commercial equipments
- ❖ 办公和电子测试设备
Office and testing equipments

技术参数 Technical specifications

额定电压 Maximum continuous operating voltage :	250VAC
工作频率 Operating frequency :	50/60Hz
额定电流 Rated currents :	1A ~ 10A @ 40°C Max.
耐压试验(一分钟) High potential test voltage(1 min) :	Line to Line 1500VDC / Line to Ground 1500VAC
工作和储存环境温度 Operation and storage temperature range :	-25°C~+85°C (25/085/21)

型号 Filter	额定电流 Rated current @40°C [A]	泄露电流 ** Leakage rate ** 250VAC/50Hz [mA]	电容 Capacitance Cy [nF]	电阻 Resistance R [kΩ]	端接方式 Terminal connections 	电路图 Electrical schematic [fig.]	外形尺寸 Dimensions [fig.]
AG2101-1-13F*	1	< 0.5	2.2	1500	- 13	1	1
AG2101-3-13F*	3	< 0.5	2.2	1500	- 13	1	1
AG2101-6-13F*	6	< 0.5	3.3	1500	- 13	1	1
AG2101-10-13F*	10	< 0.5	3.3	1500	- 13	1	1
AG2101-1-13FT*	1	< 0.5	2.2	1500	- 13	2	2
AG2101-3-13FT*	3	< 0.5	2.2	1500	- 13	2	2
AG2101-6-13FT*	6	< 0.5	3.3	1500	- 13	2	2
AG2101-10-13FT*	10	< 0.5	3.3	1500	- 13	2	2

* 后缀“F”代表带单个保险丝；后缀“FT”代表带两个保险丝。

The suffix “F” represents filter module with one fuse; the suffix “FT” represents filter module with two fuses.

** 最大泄漏电流是在正常状态下测得，注意如果中线断开，最坏情况下泄露电流可能达到两倍以上。

Maximum leakage under normal operating conditions, note: if the neutral line is interrupted, worst case leakage could reach twice this level.

电路图 Electrical schematics

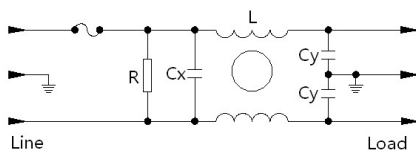


fig. 1

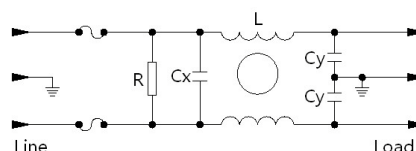
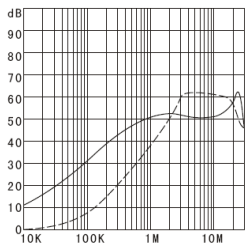


fig. 2

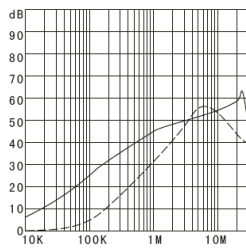
典型衰减特征 Typical filter attenuation

Per CISPR 17/50Ω system [——— 共模 Common mode ; - - - - - 差模 Differential mode]

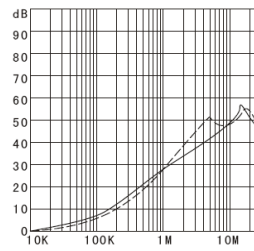
AG2101-1-13F



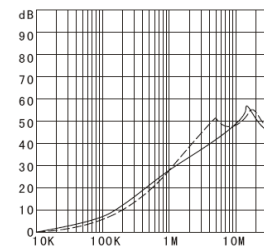
AG2101-3-13F



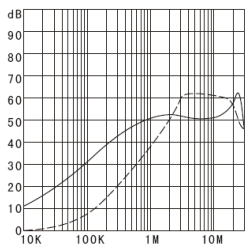
AG2101-6-13F



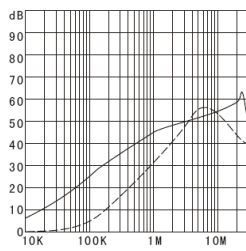
AG2101-10-13F



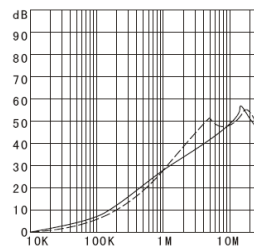
AG2101-1-13FT



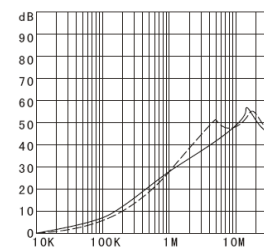
AG2101-3-13FT



AG2101-6-13FT



AG2101-10-13FT



外形尺寸 Dimensions [All dimensions in mm]

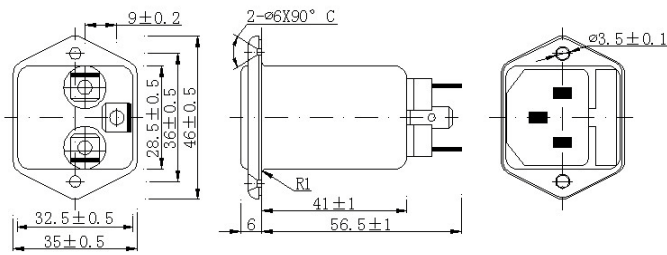


fig. 1

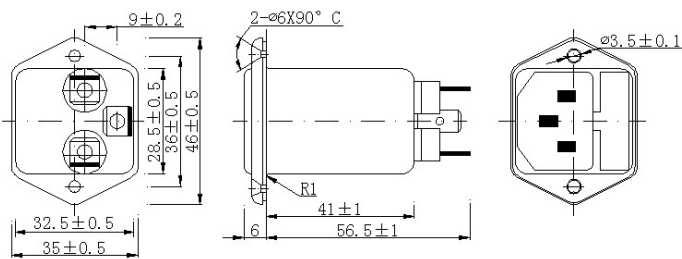


fig. 2