

PCB 安装式直流通用系列 PCB-Mounting Direct Current General Purpose Series



特点和优点 Features and benefits

- ❖ 体积小，PCB 安装式一般直流用途滤波器
Small size, PCB-mounting filter for DC general purpose
- ❖ 用于电源模块和小型电子仪表
For modular power supplies and mini-electronic instruments
- ❖ 有效地滤除共差模噪声
Filtering out the noise of common and differential mode effectively

典型应用 Typical applications

- ❖ 工业电子设备
Industrial electronic equipment
- ❖ 医疗和商业设备
Medical and commercial equipments
- ❖ 电源和测试设备
Power supplies and testing equipments

技术参数 Technical specifications

| | |
|-----------------------------------------------------|---------------------------------------------|
| 额定电压 Maximum continuous operating voltage : | 80VDC |
| 工作频率 Operating frequency : | 50/60Hz |
| 额定电流 Rated currents : | 1A ~ 20A @ 40°C Max. |
| 耐压试验(一分钟) High potential test voltage(1 min) : | Line to Line 400VDC / Line to Ground 750VDC |
| 工作和储存环境温度 Operation and storage temperature range : | -25°C~+85°C (25/085/21) |

| 型号 Filter | 额定电流 Rated current @40°C [A] | 电容 Capacitance Cy [nF] | 端接方式 Terminal connections | 电路图 Electrical schematic [fig.] | 外形尺寸 Dimensions [fig.] |
|--------------|------------------------------------|------------------------------|------------------------------|---------------------------------------|------------------------------|
| DG2101-1-00 | 1 | 22 | - 00 | 1 | 1 |
| DG2101-2-00 | 2 | 22 | - 00 | 1 | 1 |
| DG2101-3-00 | 3 | 22 | - 00 | 1 | 1 |
| DG2101-5-00 | 5 | 22 | - 00 | 1 | 2 |
| DG2201-3-00 | 3 | 220 | - 00 | 2 | 3 |
| DG2201-6-00 | 6 | 10 | - 00 | 2 | 3 |
| DG2201-10-00 | 10 | 33 | - 00 | 3 | 4 |

电路图 Electrical schematics

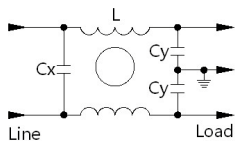


fig. 1

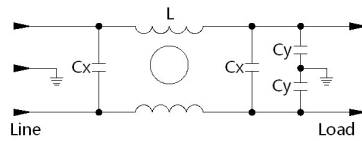


fig. 2

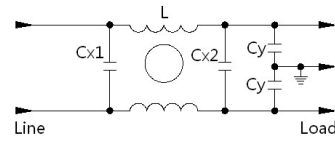
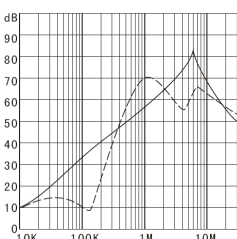


fig. 3

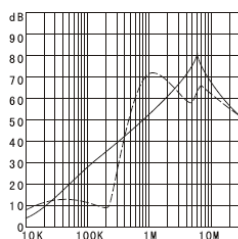
典型衰减特征 Typical filter attenuation

Per CISPR 17/50Ω system [———— 共模 Common mode ; - - - - - 差模 Differential mode]

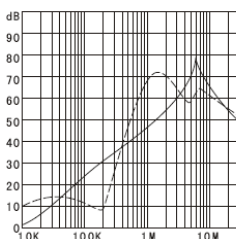
DG2101-1-00



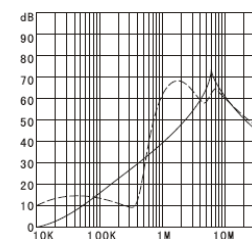
DG2101-2-00



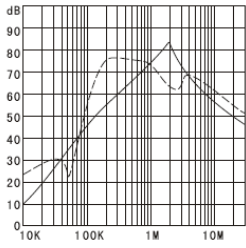
DG2101-3-00



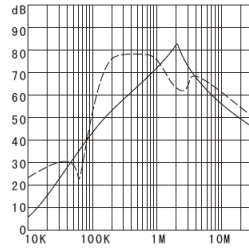
DG2101-5-00



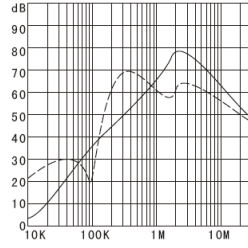
DG2201-3-00



DG2201-6-00



DG2201-10-00



外形尺寸 Dimensions [All dimensions in mm]

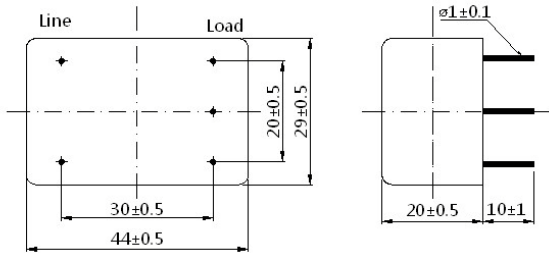


fig. 1

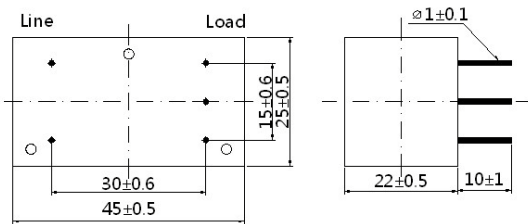


fig. 2

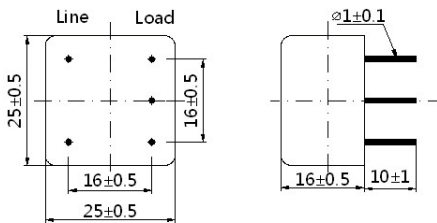


fig. 3

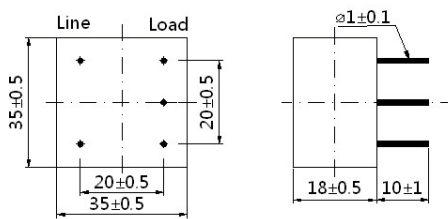


fig. 4